



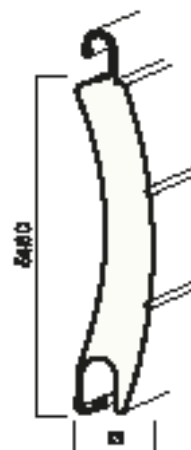
Tappo avvolgente a scarpetta

TAC 55

alta densità

Caratteristiche tecniche

Spessore nominale	13 mm
Altezza nominale	54,60 mm
Numero stecche per metro	18,32 unità
Larghezza massima testata	4.800 mm
Peso al mq (densità 75 kg/m ³)	3,03 kg/m ²
Peso al mq (alta densità 250 kg/m ³)	4,35 kg/m ²
Lunghezze standard prodotto	da 5,50 a 6,50 m
Diametro minimo di avvolgimento	60 mm



Compatibilità Guide

GUI2817 - GUI2819 - GUI3025 - GUI3541 - GUIZT - GUIZT2
- GUI2887 - GUIZTA - GUIZTACOIB

Reazione al fuoco (EN 13501-1)

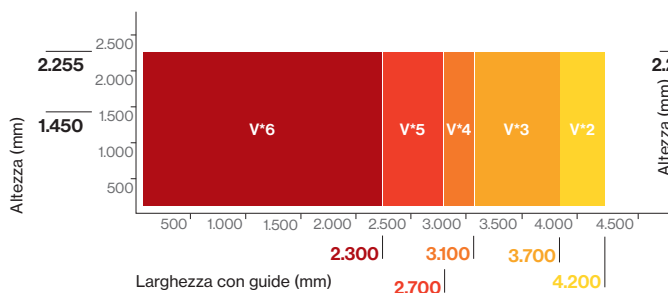
Senza asole: Classe B-s2, d0
Con asole: Classe C-s2, d0

Tabella dei diametri di ingombro

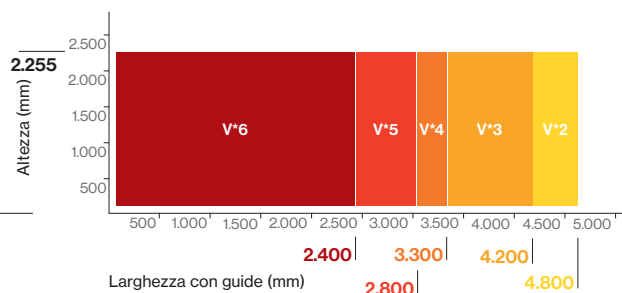
	Altezza													
	800	1.000	1.200	1.400	1.600	1.800	2.000	2.200	2.400	2.600	2.800	3.000	3.200	3.400
Rullo 60	140	150	160	170	175	185	190	195	200	210	220	225	230	235
Rullo 70	165	170	185	190	200	205	210	220	225	230	240	245	250	260

Resistenza al vento (EN 13659)

CE



Resistenza al vento alta densità



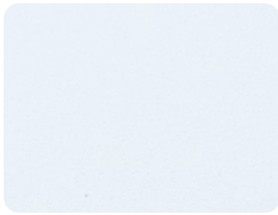
Minimo obbligatorio (CE)

1 V*2: 100 Pa ≈ 46 km/h V*3: 150 Pa ≈ 56 km/h V*4: 250 Pa ≈ 73 km/h V*5: 400 Pa ≈ 92 km/h V*6: 600 Pa ≈ 112 km/h

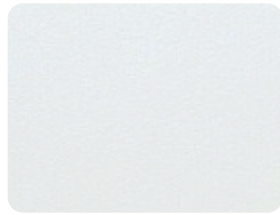
dettagli guide pagg. 58-59 di questo catalogo

Cartella Colori*

avvolgibili



RAL 9016 1-1



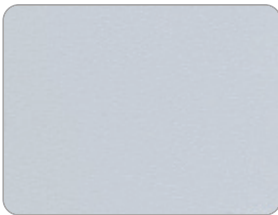
BIANCO 2-1



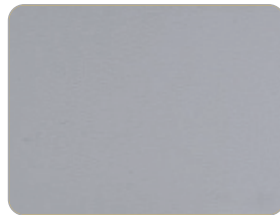
RAL 1013 3-2



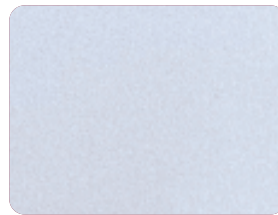
SABBIA 4-2



RAL 7035 5-2



GRIGIO 007 6-4



ARGENTO RAL 9006 7-2



VERDE OLIVA 8-3



VERDE BANDIERA 9-4



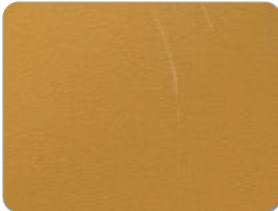
VERDE SCURO RAL 6005 10-2



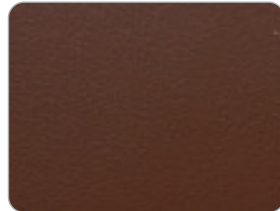
RAL 3004 11-2



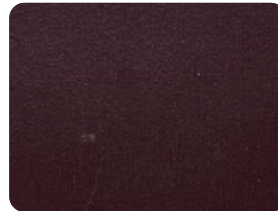
RAL 3005 12-2



OCRA 13-4



RAL 8003 14-3



RAL 8017 15-2



RAL 9011 18-2



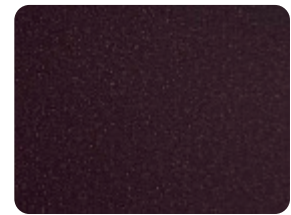
NOIR 200 SABLÉ 19-4



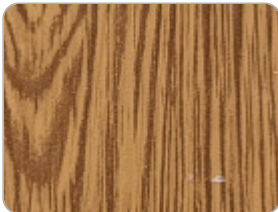
RAFFAELLO VERDE 20-4



GRAFITO 21-4



RAFFAELLO MARRONE 22-4



LEGNO MEDIO 23-4



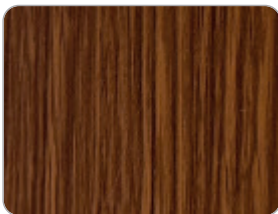
LEGNO SCURO 24-4



GOLDEN 25-4



LEGNO CHIARO 26-4



CILIEGIO 27-4



RAL 5011 28-4

* altri colori disponibili su richiesta;
contattare gli uffici commerciali per tempi
e condizioni