

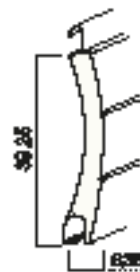


TAC 39

alta densità

Caratteristiche tecniche

Spessore nominale	8,38 mm
Altezza nominale	39,25 mm
Numero stecche per metro	25,47 unità
Larghezza massima testata	3.050 mm
Peso al mq (densità 75 kg/m ³)	2,05 kg/m ²
Peso al mq (alta densità 250 kg/m ³)	3,15 kg/m ²
Lunghezze standard prodotto	da 5,50 a 6,50 m
Diametro minimo di avvolgimento	42 mm



Compatibilità Guide

GUI2817 - GUI2819 - GUI3025 - GUI3541 - GUIZT - GUIZT2
- GUI2887 - GUIZTA - GUIZTACOIB

Reazione al fuoco (EN 13501-1)

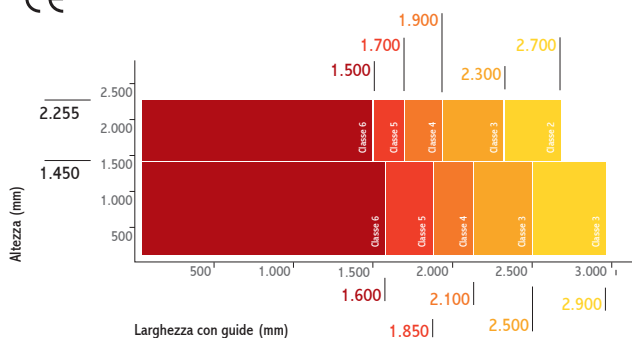
Senza asole: Classe B-s2, d0
Con asole: Classe C-s2, d0

Tabella dei diametri di ingombro

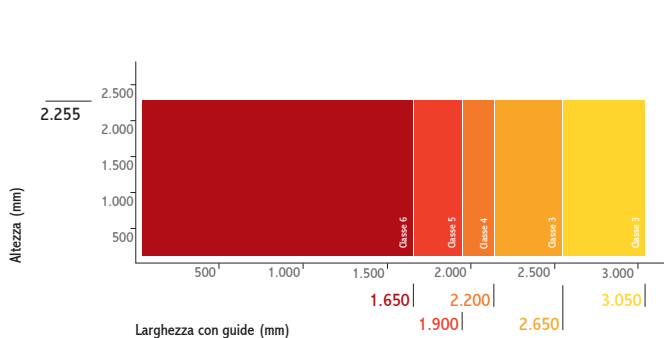
Rullo 60	Altezza													
	800	1.000	1.200	1.400	1.600	1.800	2.000	2.200	2.400	2.600	2.800	3.000	3.200	3.400
	115	120	130	140	145	150	155	160	165	170	175	180	185	190

Resistenza al vento (EN 13659)

CE



Resistenza al vento alta densità



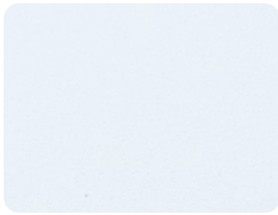
Minimo obbligatorio (CE)

1 V*2: 100 Pa ≈ 46 km/h V*3: 150 Pa ≈ 56 km/h V*4: 250 Pa ≈ 73 km/h V*5: 400 Pa ≈ 92 km/h V*6: 600 Pa ≈ 112 km/h

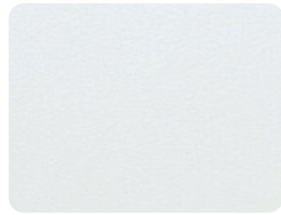
dettagli guide pagg. 58-59 di questo catalogo

Cartella Colori*

avvolgibili



RAL 9016 1-1



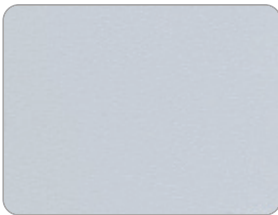
BIANCO 2-1



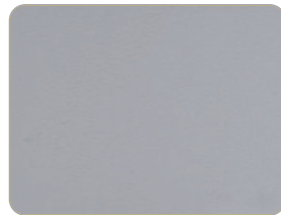
RAL 1013 3-2



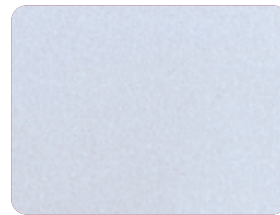
SABBIA 4-2



RAL 7035 5-2



GRIGIO 007 6-4



ARGENTO RAL 9006 7-2



VERDE OLIVA 8-3



VERDE BANDIERA 9-4



VERDE SCURO RAL 6005 10-2



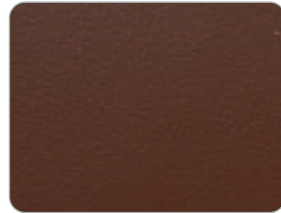
RAL 3004 11-2



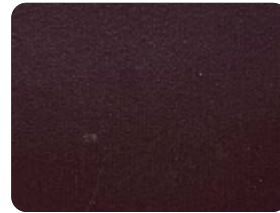
RAL 3005 12-2



OCRA 13-4



RAL 8003 14-3



RAL 8017 15-2



RAL 9011 18-2



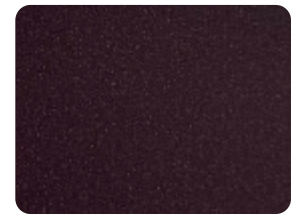
NOIR 200 SABLÉ 19-4



RAFFAELLO VERDE 20-4



GRAFITO 21-4



RAFFAELLO MARRONE 22-4



LEGNO MEDIO 23-4



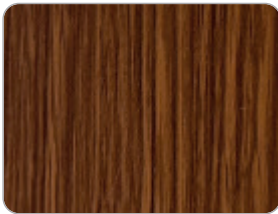
LEGNO SCURO 24-4



GOLDEN 25-4



LEGNO CHIARO 26-4



CILIEGIO 27-4



RAL 5011 28-4

* altri colori disponibili su richiesta;
contattare gli uffici commerciali per tempi
e condizioni